



23 Cedar Street
Paris, ON



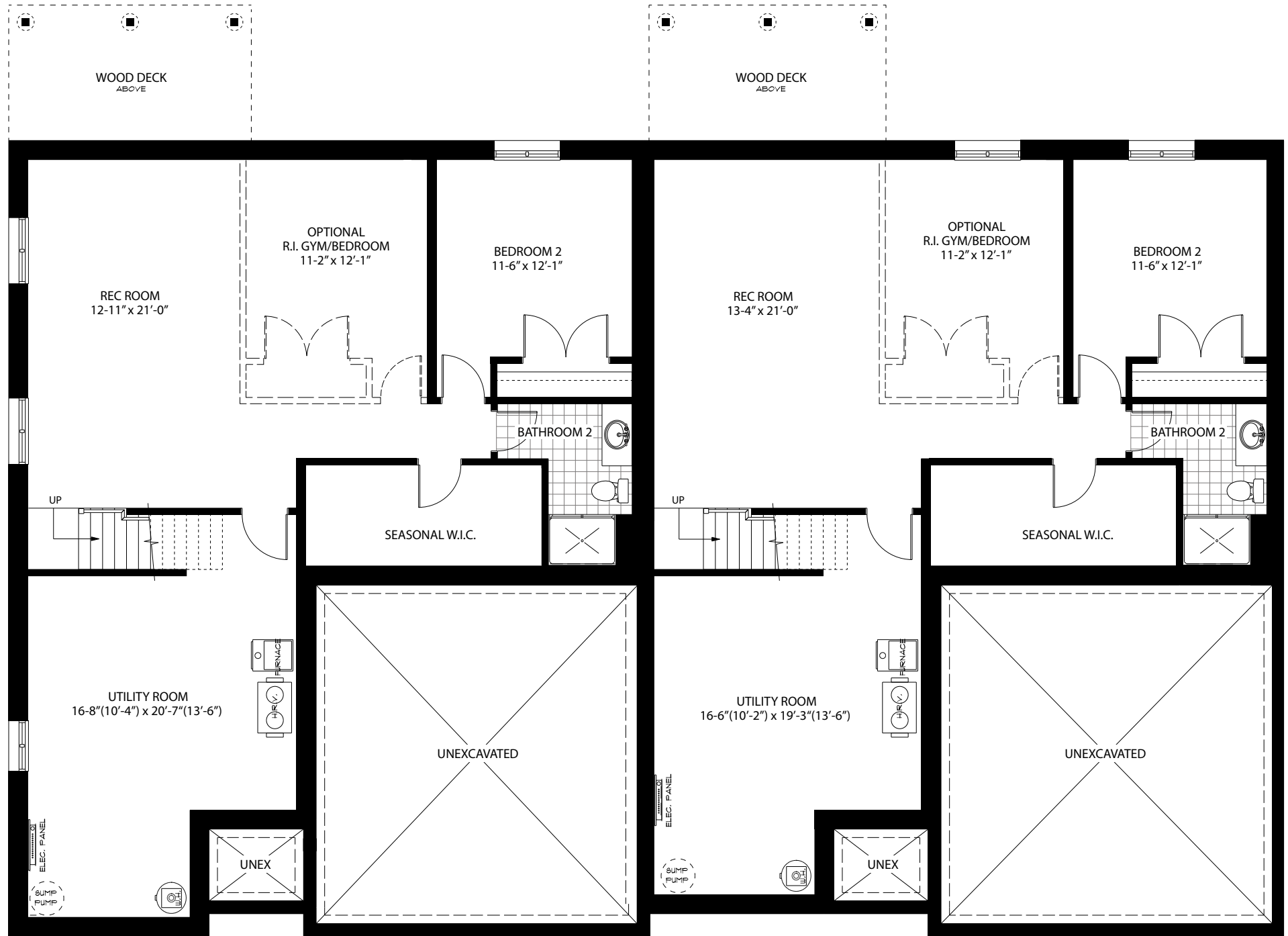
PINEVEST
HOMES



MAIN FLOOR • END UNIT
1,325 SQ.FT.

MAIN FLOOR • INTERIOR UNIT
1,295 SQ.FT.

Rendering is an artist concept. All floor plans are approximate inside dimensions. Pinevest Homes reserves the right to make changes without notice. September 2018. E. & O. E.



LOWER LEVEL • END UNIT
865 SQ.FT.

LOWER LEVEL • INTERIOR UNIT
900 SQ.FT.

Rendering is an artist concept. All floor plans are approximate inside dimensions. Pinevest Homes reserves the right to make changes without notice. September 2018. E. & O. E.